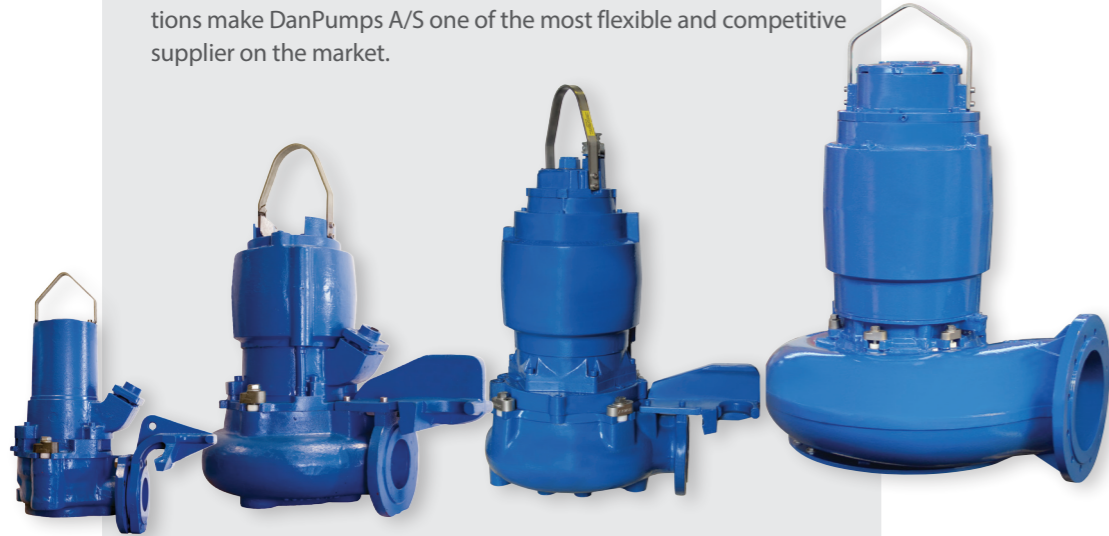


About DanPumps A/S

DanPumps A/S was founded in 2013 and exclusively engaged in the sale of pumps for utilities and industry in Denmark. Following the merger between Sondex Pumps A/S and DanPumps A/S in 2017, the aim has been to specialize in the development and manufacturing of high quality pumps.

The complete pump program from DanPumps A/S is constantly evolving and the ability to supply the market with customized solutions make DanPumps A/S one of the most flexible and competitive supplier on the market.



Submersible and dry-installed sewage pumps

We offer you a solution for all installations, wet without the unique cooling jacket or dry with the cooling jacket, also a portable solution including the cooling jacket.

As an option, all DanPump wastewater pumps for dry installation can be delivered with IEC standard motors, type S-WN.

High-efficiency engines with unique protection against heat and moisture

The engines are classified according to IE3. All S-WP motors have Class F insulation (class H is optional), 3 thermal circuit breakers, and moisture sensors that warn against moisture lubrication or before it causes damage to the motor.

DanPumps wastewater program with long durability

The S-WP range is a combination of high efficiency, intelligent design and practical features providing a user-friendly pump with long durability. The S-WP range of wastewater pumps, covers almost every demand for pumps within the wastewater market. This we can do by choosing the right pump with the right impeller, that is optimal for the task – with other words we customize the right solution. When choosing a wastewater pump from DanPumps, you are sure to get the right and well proven solution for the task.



Danpumps A/S
Nordager 25
DK-6000 Kolding
Denmark

Tel.: +45 86 57 13 44
info@sonflow.dk
www.sonflow.dk



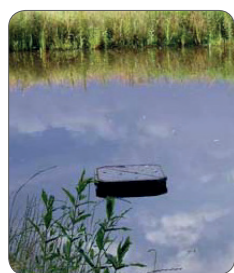
DanPumps S-DP og S-WS Pumps

Drainage and Sludge pumps



Copyright © 2017 DanPumps A/S - DanPumps A/S cannot be held responsible for possible errors in catalogues, brochures and other printed materials. DanPumps A/S reserves the right at any time to change the specifications without notice.

新法機械有限公司
NEW WAY ENGINEERING CO., LTD.
香港九龍新蒲崗六合街8號六合工業大廈22字樓F座
FLAT F, 22/F, LUK HOP INDUSTRIAL BUILDING,
8 LUK HOP STREET, SAN PO KONG, KOWLOON, H.K.
Tel : 2325 6892, 2325 7196 Fax No.: (852) 2322 1768
E-mail : info@newway.com.hk



DanPumps drainage pumps

Applications

DanPumps S-DP is a high-efficient lightweight drainage pump built in aluminium, which is an ideal solution for tough dewatering and transfer duties runs continuously at any water level without overheating - the ideal choice for plug-in operations and is ready for use when delivered on site.

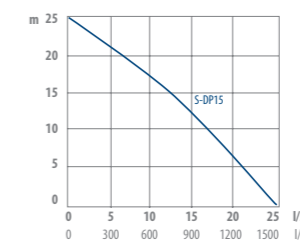
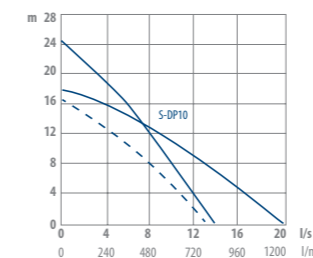
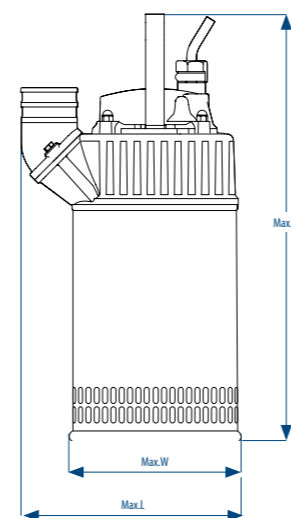
Design

Low weight and robust design securing optimal transportation, handling and installation.

Operating standards

- Max. submersion 20m
- Max. liquid temperature 40°C
- Max. medium density: 1100 kg/m³
- Limitations pH 5-8
- Classification IP 68
- Any risk of overheating is avoided since the pumped media continuously cools the pump
- Motor protection: Build-in thermal switches in the stator windings (140°C, ±5) connected to the build-in contactor
- Built in float switch as an option

Technical specifications S-DP



Type	kW P2	o/m	Outlet flange	Dimensions in mm			Voltage (V)	Current (A)	Weight w/o cable (kg)
				Max. H	Max. W	Max. L			
S-DP10	2,3	2870	3" hose pipe*	570	230	295	230/400	8,4/4,8	30
S-DP15	3,9	2870	3" hose pipe*	570	230	295	230/400	14,1/8,1	32

* Optional discharge connections: 3", 4" including 2 1/2", 3", 4" B.S.P. threaded connections.

Materials

Castings	Aluminium		
Impeller	Stainless steel		
Casing, handle, fasteners	Stainless steel	10088: X5CrNi18-10 (W.Nr. 1.4301)	AISI 304
Shaft	Stainless steel	X20Cr13 (W.Nr. 1.4021)	AISI 420
O-rings	NBR rubber		
Double Mechanical Seal	Double mechanical seal	Primary seal: SIC/Carbon Secondary seal: Carbon	
Bearings	Upper bearing: Single-row deep groove ball bearing Lower bearing: Double angular contact ball bearing		
Cable	20 m	H07RN-F	



DanPumps Sludge pumps

Applications

DanPumps S-WS is a high-efficient submersible sludge pump built in aluminum and cast iron, which is highly portable due to its slim design - suitable for pumping sludge and water mixed with solids. The robust design provides a sturdy pump for rough conditions - the ideal choice for plug-in operations and ready for use when delivered on site.

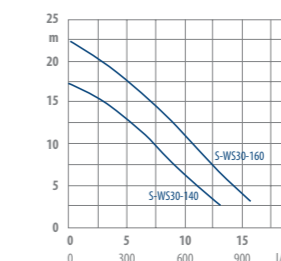
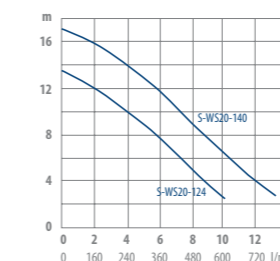
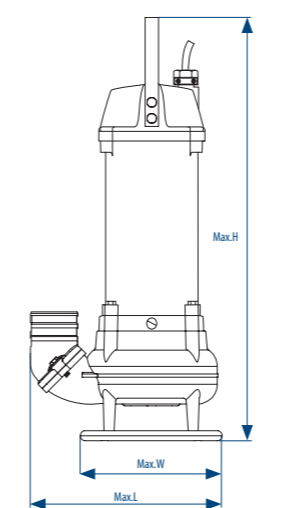
Design

Low weight and robust design securing optimal transportation, handling and installation.

Operating standards

- Max. submersion 20m
- Max. liquid temperature 40°C
- Max. medium density: 1100 kg/m³
- Limitations pH 5-8
- Classification IP 68
- Motor protection: Build-in thermal switches in the stator windings (140°C, ±5) connected to the build-in contactor
- Reliable and powerful
- Built in float switch as an option

Technical specifications S-WS



Type	kW P2	o/m	Outlet flange	Dimensions in mm			Voltage (V)	Current (A)	Weight w/o cable (kg)
				Max. H	Max. W	Max. L			
S-WS20-124	2,0	2850	2 1/2" hose pipe*	700	207	320	3 x 400	4,2	29
S-WS20-140	2,0	2850	2 1/2" hose pipe*	700	207	320	3 x 400	4,2	29
S-WS30-140	3,3	2850	2 1/2" hose pipe*	700	207	320	3 x 400	6,9	36
S-WS30-160	3,3	2850	2 1/2" hose pipe*	700	207	320	3 x 400	6,9	36

* Optional: 3", 4" hose connection including 2 1/2", 3", 4" B.S.P. threaded flanges.

Materials

Motor housing	Aluminium		
Volute and impeller	Ductile cast iron	1563:ENGJS-HB150	ASTM A 536-80:60-40-18
Handle and fasteners	Stainless steel	10088: X5CrNi18-10 (W.Nr. 1.4301)	AISI 304
Shaft	Stainless steel	10088:X20Cr13 (W.Nr. 1.4057)	AISI 420
O-rings	NBR rubber		
Double mechanical seal	Double mechanical seal	Primary seal: SIC/Carbon Secondary seal: Carbon	
Bearings	Upper bearing: Single-row deep groove ball bearing Lower bearing: Double angular contact ball bearing		
Cable	20 m	H07RN-F	