



DanPumps

DanPumps S-WN Pumps

Vertical & horizontal wastewater pumps for dry pit installations



新法機械有限公司

NEW WAY ENGINEERING CO., LTD.

香港九龍新蒲崗六合街8號六合工業大廈22字樓F座

FLAT F, 22/F, LUK HOP INDUSTRIAL BUILDING,

8 LUK HOP STREET, SAN PO KONG, KOWLOON, H.K.

Tel : 2325 6892, 2325 7196

Fax No.: (852) 2322 1768

E-mail : info@newway.com.hk



DanPumps S-WN Pumps for Wastewater Applications

The dry installed DanPumps S-WN pumps are used for horizontal and vertical mounting. The pumps are compact in design to meet a wide range of service conditions. They are driven by energy saving air-cooled IEC motor and connected with the piping with flanges on both suction and discharge sides.

The Wastewater Program

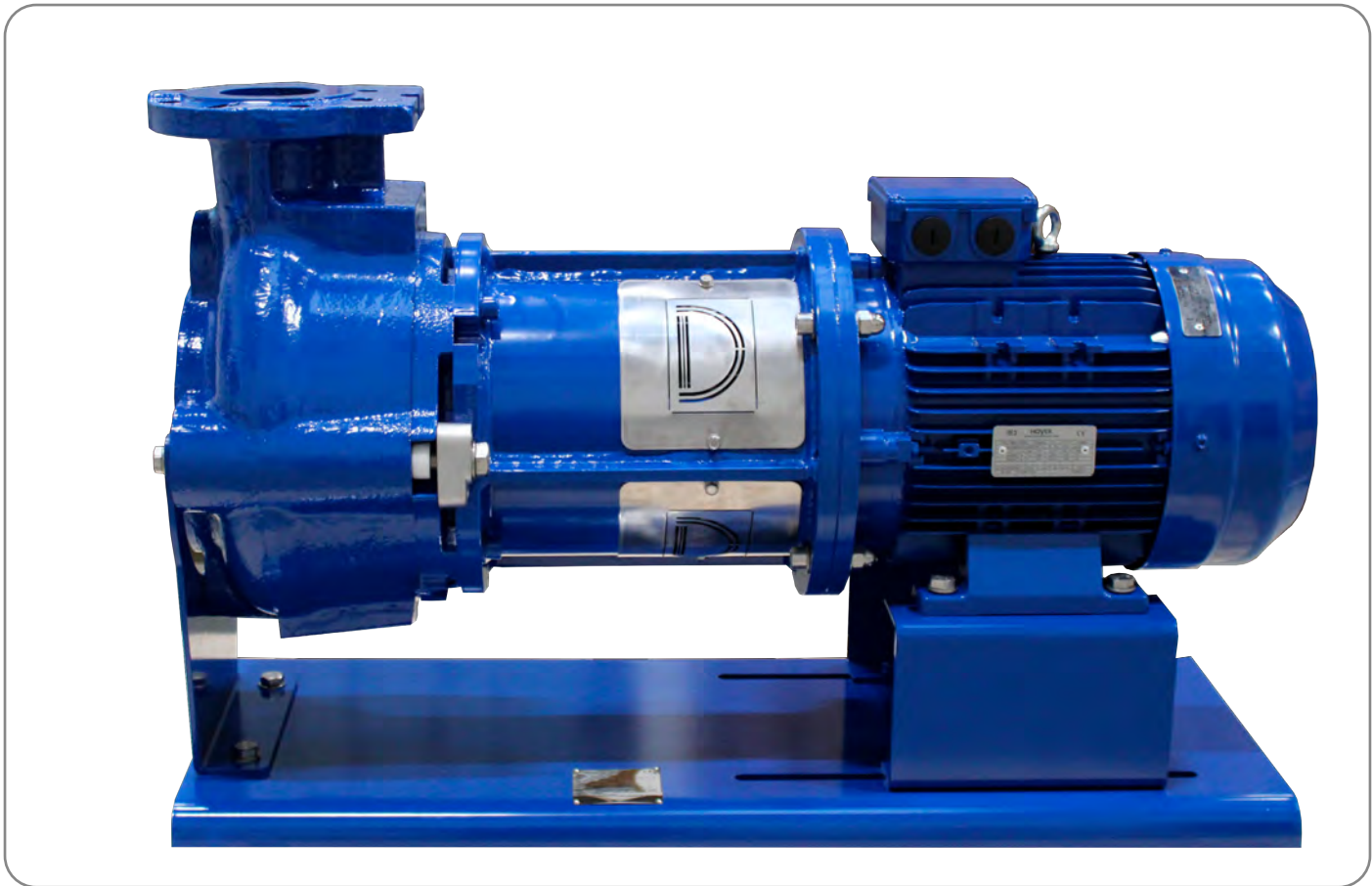
With the range of pumps from the small S-WN1 to the big S-WN5, we cover the need from light industrial effluents to heavy duty wastewater jobs from both cities and industries. The flowrate varies from 68m³/h to 4000 m³/h with connections from DN80 to DN600.

The S-WN pumps can be used in many different applications by adjusting motor size and impeller type, the solution can easily be customized to comply with your requirements.

Quality & sustainability

We are committed to providing our customers with the best products at the highest quality standards in the industry. We provide complete testing facilities, capable of demonstrating pump performance and testing ancillary equipment to ensure smooth commissioning and start-up procedures. Certified in accordance with ISO 9001:2015 and professional pump services - we can ensure the right solution that meets your specific needs:

- High pump efficiency
- Non-clogging impellers
- Life-long reliability



Fast lock latch bolt



Double mechanical cartridge seal



B-tween impeller

Unique cartridge seals & easy maintenance

Our unique double mechanical seals are installed in a user-friendly cartridge, which makes it possible to change the seal without using any special tools – it eliminates any risk of improper installation.

Fast Lock Latch Bolt

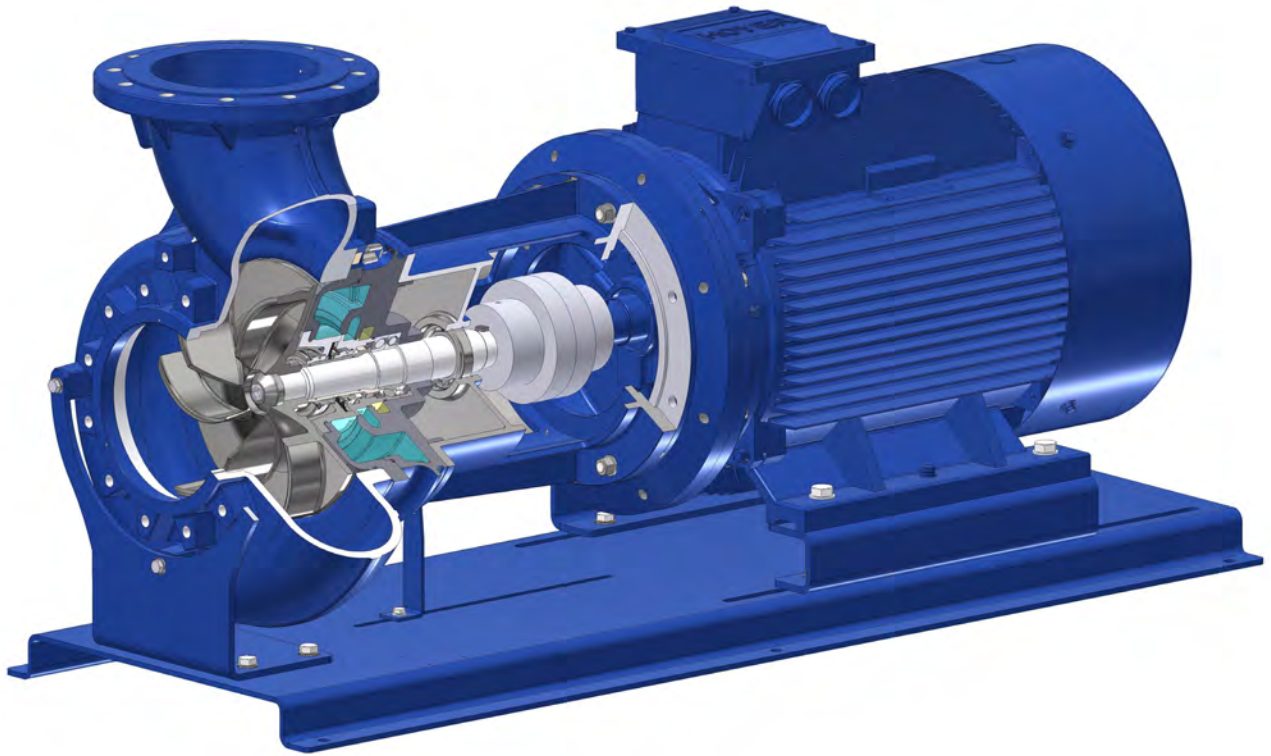
Another unique feature for the DanPumps S-WN-line is the fast lock latch bolts that make it easy to separate the pump from the motor. This feature is very popular within the service staff, as it reduces maintenance downtime considerably.

Higher efficiency with adjustable wear-ring.

The wear-ring reduces the hydraulic loss between the impeller and the wear-ring. With this feature the wear-ring can regularly be adjusted to optimize the pump's efficiency.

Premium Efficiency motor

A Premium Efficiency motor as standard is the best way to reduce energy use as it improves the efficiency without affecting the risk of blockage. An air-cooled IEC motor from 2,2 to 200 kW. Suitable for pumping of wastewater and sewage from building and sites in domestic, commercial, industrial and municipal areas.



High Efficiency with Unique Features

The design of the S-WN pump is a combination between high efficiency, intelligent design and practical features.

The efficiency of the pump is very important to be able to reduce running costs of the pump, and in the same time reduce the carbon footprint to the environment, which is achieved by the design of the impeller and use of high-efficient motors – it gives you a user-friendly pump with a long-life cycle. Easy service will reduce maintenance costs, as it is simplified without the need to dismantle the entire pump.

DanPumps has a complete range of impellers to match your specific needs. The impellers are optimized for the best efficiency and reliability.

The motor and hydraulics of the S-WN pump create a great pump reliability and high pump efficiency, which means:

- Reduced risk of overflows
- Reduced risk of interrupted service
- Reduced breakdown costs
- Reduced maintenance costs

Features:

- All impellers fit in the same volute
- Cartridge seal
- High-efficiency motors from well-known suppliers
- Easy maintenance
- Dry-installed, therefore no risk of contamination
- No need for entry into pump stations
- Easy removal of the motor without disconnecting the pump
- Good service access to pump suction side
- Built-in frequency converter up to 22 kW



Horizontal or vertical pumping in dry installations

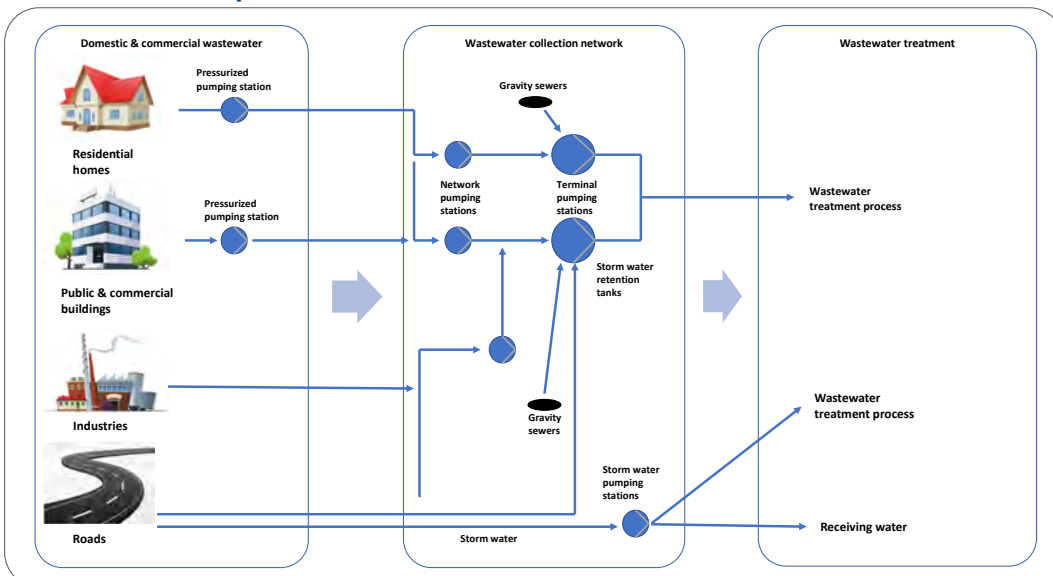
Vertical

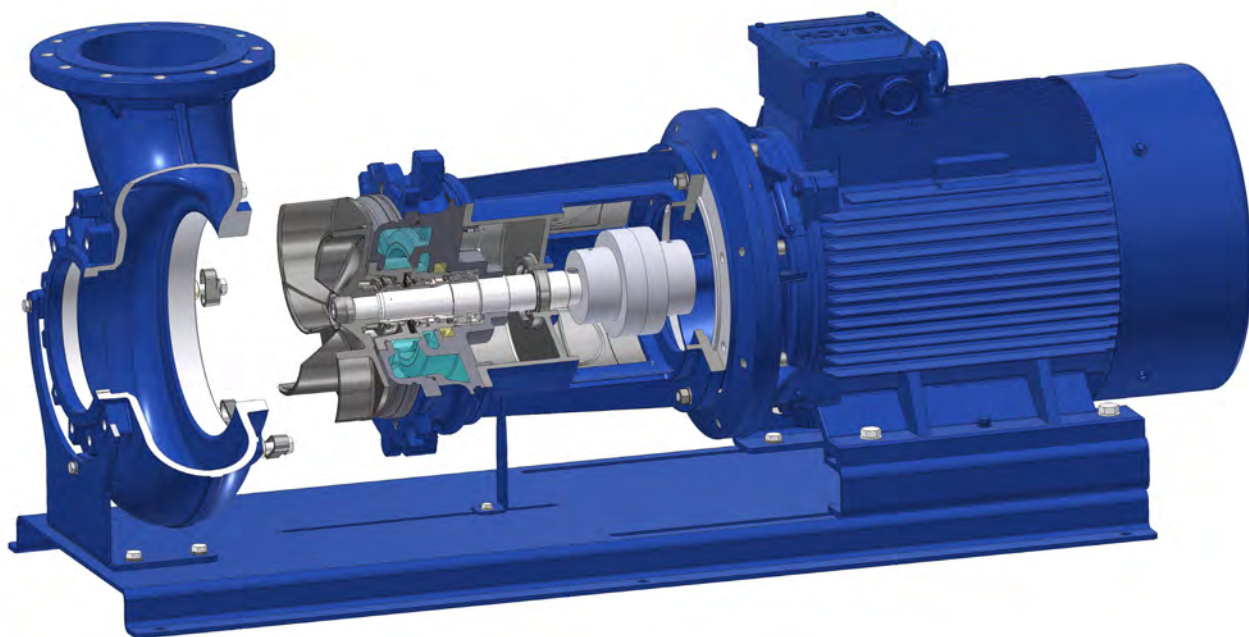
- Requires a smaller service area than a horizontal pump
- Adjustable legs which makes installation easier
- Top pull-out construction, easy access to the pump parts and easy removal of the motor
- Easy disassembly when making service by crain

Horizontal

- Easy dry installation
- The pump is on a baseplate, where sliding makes service easy
- Pump parts are easily accessible
- Suitable for almost all indoor applications due to its low headroom requirements

Wastewater collection process





Construction

- Horizontal version mounted on a steel baseplate, vertical version mounted on adjustable legs
- Pull-out design allows easy removal of motor without disconnecting pump from pipework
- Cartridge seal with double mechanical seals - the service time of changing the seal is reduced compared to a normal double mechanical seal
- Flexible coupling prolonging the lifetime of a pump
- Available in standard and explosion-proof versions in accordance with international standard ATEX operation is 75 °C
- Maximum ambient temperature: +75 °C
- Motor protection type: IP 55
- Insulation Class: F to 155 °C (Class H as option)
- Connections from DN80 to DN600

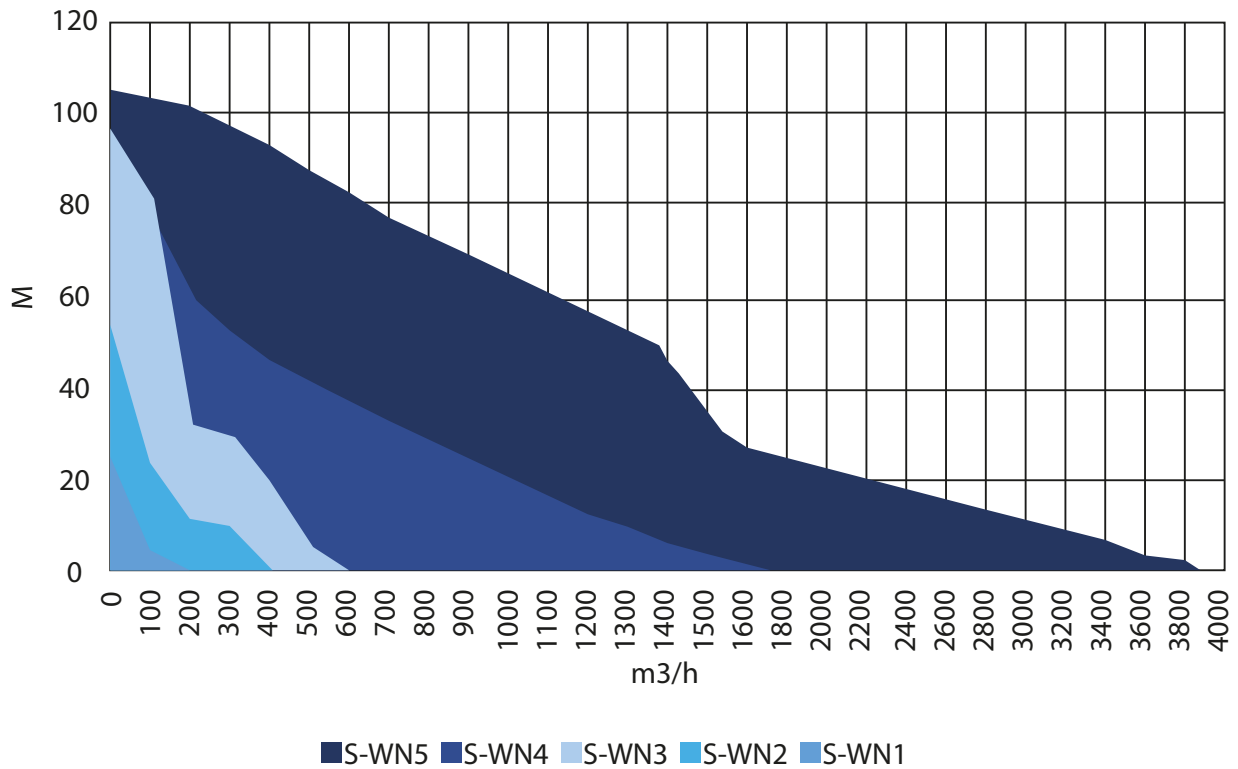
Main benefits:

- Dry-installed
- No risk of contamination
- Pull-out design
- IEC air-cooled motors IP55 (ATEX approved is optional)
- Flexible coupling for gentle operation of the pump

Main applications:

- Clear water
- Polluted water
- Heavily-polluted sewage containing solids, fecal slurry and sludge

S-WN Pumps Curves



Choose the most optimal impeller:

- **One or two channel impeller**
- Higher efficiency (70-80%) and some possibility of clogging
- **B-tween impeller**
- Less efficient (60-75%) than the channel impeller, but lower possibility of clogging
- **Vortex impeller**
- Less efficient (30-40%), but it is clogging free due to free passage, therefore it is reliable



Pump housing, base elbow, sealing housing	Grey cast iron GJL-250 (GG25) A48 Class 35
Impeller (cast iron), adapter	Ductile cast iron GJS-400-15 (GGG-40) A536 GR 65-45-15
Stainless impeller (option)	Stainless cast steel W. Nr. 1.4401 / AISI 316
Shaft	Stainless steel W. Nr. 1.4057 / AISI 431
Seal sleeve, screws	Stainless steel W. Nr. 1.4301 / AISI 304
O-rings	Nitrile / NBR
Oil	Mobil DTE 24 / Premium Hydraulic
Mechanical seal	Media side: SIC/SIC Cooling side: SIC (Carbon)
Motor	Hoyer / IE3 / Class F, optional as class H

They are delivered in cast iron, stainless steel and duplex as an option

About DanPumps A/S

DanPumps A/S was founded in 2013 and exclusively engaged in the sale of pumps for utilities and industry in Denmark.

Following the merger between Sondex Pumps A/S and DanPumps A/S in 2017, the aim has been to specialize in the development and manufacturing of high quality pumps.

The complete pump program from DanPumps A/S is constantly evolving and the ability to supply the market with customized solutions make DanPumps A/S one of the most flexible and competitive supplier.



Submersible and dry-installed sewage pumps

We offer you a solution for all installations, wet without the unique cooling jacket or dry with the cooling jacket, also a portable solution including the cooling jacket.

As an option, all DanPump wastewater pumps for dry installation can be delivered with IEC standard motors, type S-WN.

High-efficiency engines with unique protection against heat and moisture

The engines are classified according to IE3. All S-WP motors have class F insulation (class H is optional), 3 thermal circuit breakers, and moisture sensors that warn against moisture lubrication or before it causes damage to the motor.

DanPumps wastewater program with long durability

The S-WP range is a combination of high efficiency, intelligent design and practical features providing a user-friendly pump with long durability. The S-WP range of wastewater pumps, covers almost every demand for pumps within the wastewater market. This we can do by choosing the right pump with the right impeller, that is optimal for the task – with other words we customize the right solution.

When choosing a wastewater pump from DanPumps, you are sure to get the right and well proven solution for the task.



SonFlow A/S
Nordager 25
DK-6000 Kolding
Denmark

Tel.: +45 86 57 13 44
info@SonFlow.dk
www.SonFlow.dk