



Dry Pit Pump

Amphibious Type : KD series / AD series / JD series

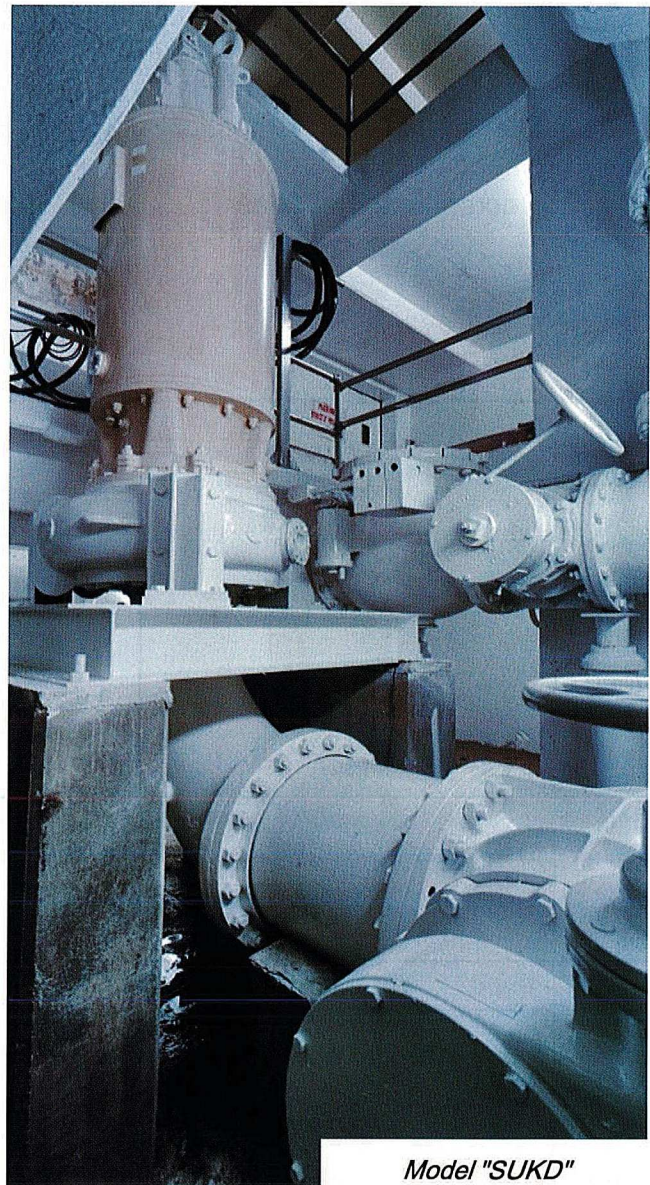
EIM has a wide range of amphibious pumps which are suitable for effective operation even when the motors being operated in non-submerged conditions or in dry conditions.

There are three primary series with different motor cooling methods for motor

1. "KD" Series ;
CLC cooling system

2. "AD" Series ;
Air cooling system

3. "JD" Series ;
By-pass cooling system



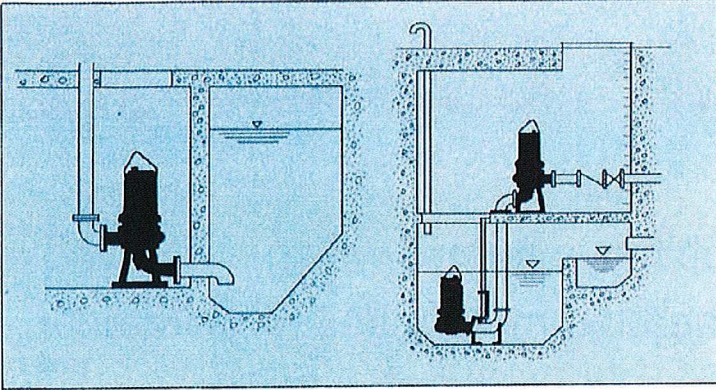
Model "SUKD"

ISO 9001 Certificate

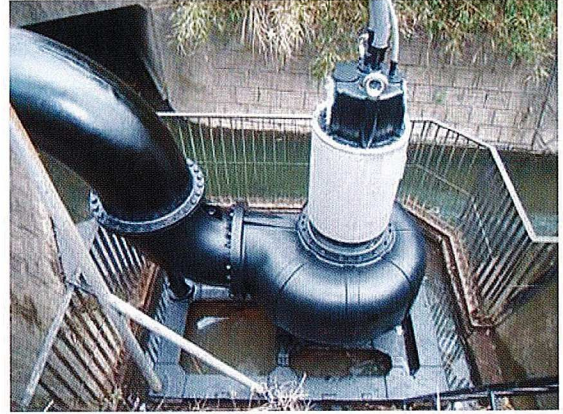


EIM ELECTRIC CO.,LTD.

Applications



Installation of Dry-Pit pumps



EIM Dry Pit Submersible Pumps are ideal and recommended for the following wide range of applications:



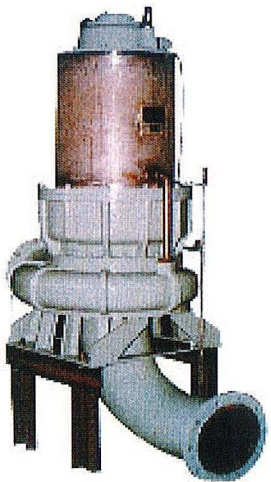
1. Applications by Installation ;

- Collection Systems
- Waste Transfer and Recirculation
- Wastewater Treatment Plants
- Dewatering of Commercial Buildings
- Shopping Malls
- Recreational Facilities

2. Applications by Pumping Liquids ;

- Raw Water
- Wastewater
- Light Slurries, Sludge
- Storm Water
- Process Water
- Waste Transfer & Recirculation

Three Series

Appearance			
Model	AD type	KD type	JD type
Cooling System	Self-air cooling	Closed loop cooling	By-pass cooling
Output	2 ~ 30 HP	30 ~ 420 HP	2 ~ 420 HP
No. of Poles	2 ~ 6 P	2 ~ 16 P	2 ~ 16 P
Rated Voltage	200 ~ 600V, 50/60Hz	200 ~ 600V, 50/60Hz (Class 1000 ~ 3000V also available)	
Insulation	Class E, F or H		

1. "KD" Series ;

The K series has a unique internal CLC motor cooling system with clean enclosed water. They are explosion proof versions available - FM approval.
Models: SUKD

2. "AD" Series ;

The A series has non-jacketed submersible motors with over-sized frames to assure better motor cooling than conventional submersible motors utilizing surrounding air.
Models: SUAD, SEAD, SUVAD, UGAD

3. "JD" Series ;

The J series is equipped with cooling jacket which utilize pumped liquid as cooling media to help motors' cooling.
Models: SUJD

Specifications

Model			Discharge mm (inch)	Motor			Rating			Solids Handling	
				Output kW	(HP)	Poles	Head m	(ft)	Capacity m3/min	mm (inch)	
"SEAD"	"SUVAD"	"UGAD"									
SEAD-82HE			80 (3)	1.5	2	2	15	49	0.2	13	0.5
SEAD-83E				2.2	3		15	49	0.4	15	0.6
SEAD-85E				3.7	5		18	59	0.5	18	0.7
SEAD-88E				5.5	7.5		24	79	0.6	19	0.7
SEAD-810E				7.5	10		28	92	0.7	20	0.8
SEAD-1010ED			100 (4)	7.5	10		15	49	1.5	33	1.3
SEAD-1015ED				11	15		22	72	1.5	33	1.3
	SUVAD-82E		80 (3)	1.5	2	4	10	33	0.2	65	2.5
	SUVAD-83E			2.2	3		14	46	0.2	65	2.5
	SUVAD-85E			3.7	5		18	59	0.3	65	2.5
		UGAD-82E	80 (3)	1.5	2	4	10	33	0.3	46	1.8
		UGAD-83E		2.2	3		11	36	0.5	56	2.2
		UGAD-85E		3.7	5		15	49	0.5	56	2.2
		UGAD-88E		5.5	7.5		20	66	0.5	56	2.2
		UGAD-810E		7.5	10		20	66	1	56	2.2
		UGAD-108E	100 (4)	5.5	7.5		12	39	1.2	76	3.0
		UGAD-1010E		7.5	10		15	49	1.5	76	3.0
		UGAD-1015E		11	15		20	66	1.5	76	3.0
		UGAD-1020E		15	20		25	82	1.5	76	3.0

Model			Discharge mm (inch)	Motor			Rating			Solids Handling	
				Output kW	(HP)	Poles	Head m	(ft)	Capacity m3/min	mm (inch)	
"SUKD"	"SUAD"	"SUJD"									
-	SUAD-82E	SUJD-82E	80 (3)	1.5	2	4	8	27	0.55	20	0.8
-	SUAD-83E	SUJD-83E		2.2	3		10	33	0.6	22	0.9
-	SUAD-85E	SUJD-85E		3.7	5		10	33	1	29	1.1
-	SUAD-88E	SUJD-88E		5.5	7.5		20	66	0.6	29	1.1
-	SUAD-810E	SUJD-810E		7.5	10		25	82	0.6	29	1.1
-	SUAD-108E	SUJD-108E	100 (4)	5.5	7.5		10	33	1.5	34	1.3
-	SUAD-1010E	SUJD-1010E		7.5	10		15	50	1.5	34	1.3
-	SUAD-1510E	SUJD-1510E	150 (6)	7.5	10		10	33	2.5	60	2.4
-	SUAD-1515ED	SUJD-1515ED		11	15		15	50	2.5	44	1.7
-	SUAD-1520ED	SUJD-1520ED		15	20		15	50	3	44	1.7
SUKD-1530ED	SUAD-1530ED	SUJD-1530ED		22	30		20	66	3	35	1.4
SUKD-2030ED	SUAD-2030ED	SUJD-2030ED	200 (8)	22	30		15	50	4	75	3.0
SUKD-2040ED	-	SUJD-2040ED		30	40		26	86	3.5	45	1.8
SUKD-2050ED	-	SUJD-2050ED		37	50		22	73	5	60	2.4
SUKD-3020ED	-	SUJD-3020ED	300 (12)	15	20	6	5	17	10	75	3.0
SUKD-3030ED	-	SUJD-3030ED		22	30		8	27	10	75	3.0
SUKD-3050ED	-	SUJD-3050ED		37	50		15	50	8	75	3.0

※ We would like to customize for the models which is not in the catalog if you need

Features

EIM Dry Pit Submersible Pumps have a good reputation among the customers in both domestic and overseas market and are rated among those pumps with highest efficiency available in today's wastewater handling industries.

Motor

The motors are equipped with built-in thermal overheating protection contacts as standard.

① "KD" Series (Closed Loop Cooling Motor)

Submersible motors are equipped with internal closed loop water circulation systems with efficient integrated heat exchangers, transferring heat from motor to pumped fluid.

② "AD" Series (Air Cooling)

The over-sized motor cooling system is usually used for small horse power applications, considering the cost. In non-submerged conditions, the over-sized motor frame with fins can prevent over heating by expanding air's interaction surface.

③ "JD" Series (By-pass Cooling)

The by-pass cooling jacket outside motor frame is usually used for medium and large horsepower applications. The pumped fluid will be circulated through surrounding internal frames and cooling jacket. It is more effective and reliable for clean water pumping

Mechanical Seals

Double mechanical face seals provide the necessary isolation between the electric motor the pumped liquid. The seal surfaces are made of extremely wear resistant materials. And the oil chamber acts as a lubricant and cooling medium and provides an extra protection zone between the pumped liquid and the motor.

Bearings

Specially adapted for vertical assembly, both upper and lower bearings are prepacked with special high temperature grease. Unique bearing cooling system lengthens the lives of both the bearing and grease. On larger horsepower units, the lower bearing consists of a combination of double row angular contact ball bearings.

Cable Entry

A bell-mouth is attached to the cable packing of nitrile butadiene rubber.

Materials

Principal components such as Impeller, Pump Casing and Suction Cover are made of cast iron. All external hardware is made of high strength 304 stainless steel. Please contact us for availability of other materials.

Lifting Device

Large lifting eyebolts are provided for the safe handling of the pump.

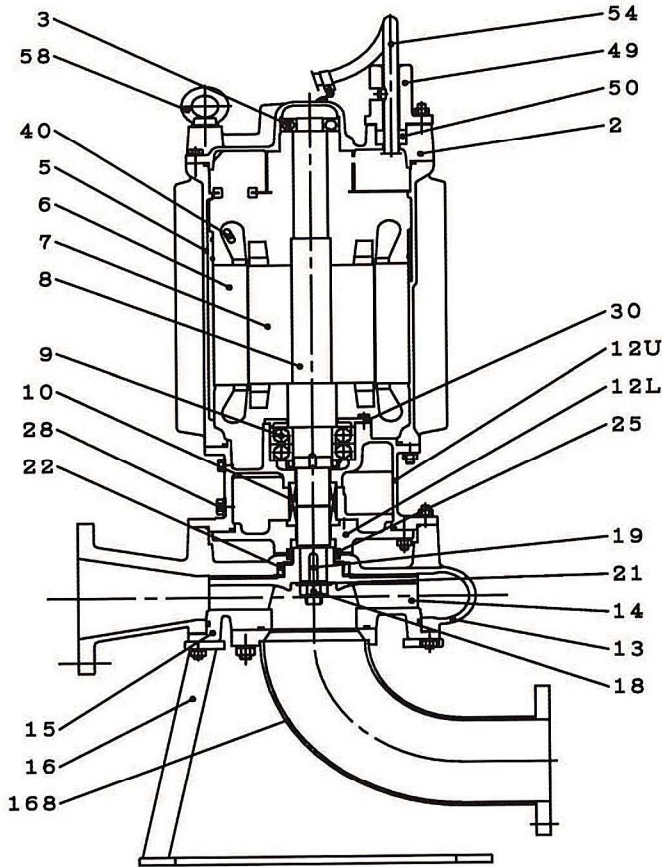
Performance Curves

• Please refer to individual catalog of Model SE for Model SEAD, catalog of Model SUV for Model SUVAD, catalog of Model UG for Model UGAD, catalog of Model SU for Model SUKD, Model SUJD, and Model SUAD for details.

Dimensions

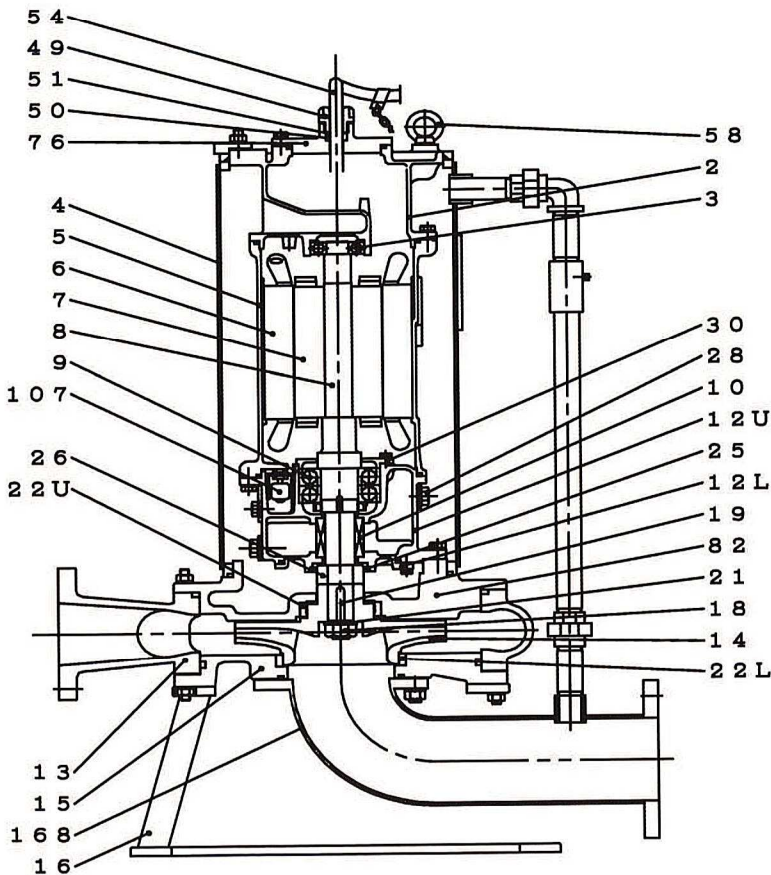
• Please contact us for further details.

Cross Section and Parts (ex. Model SUAD)



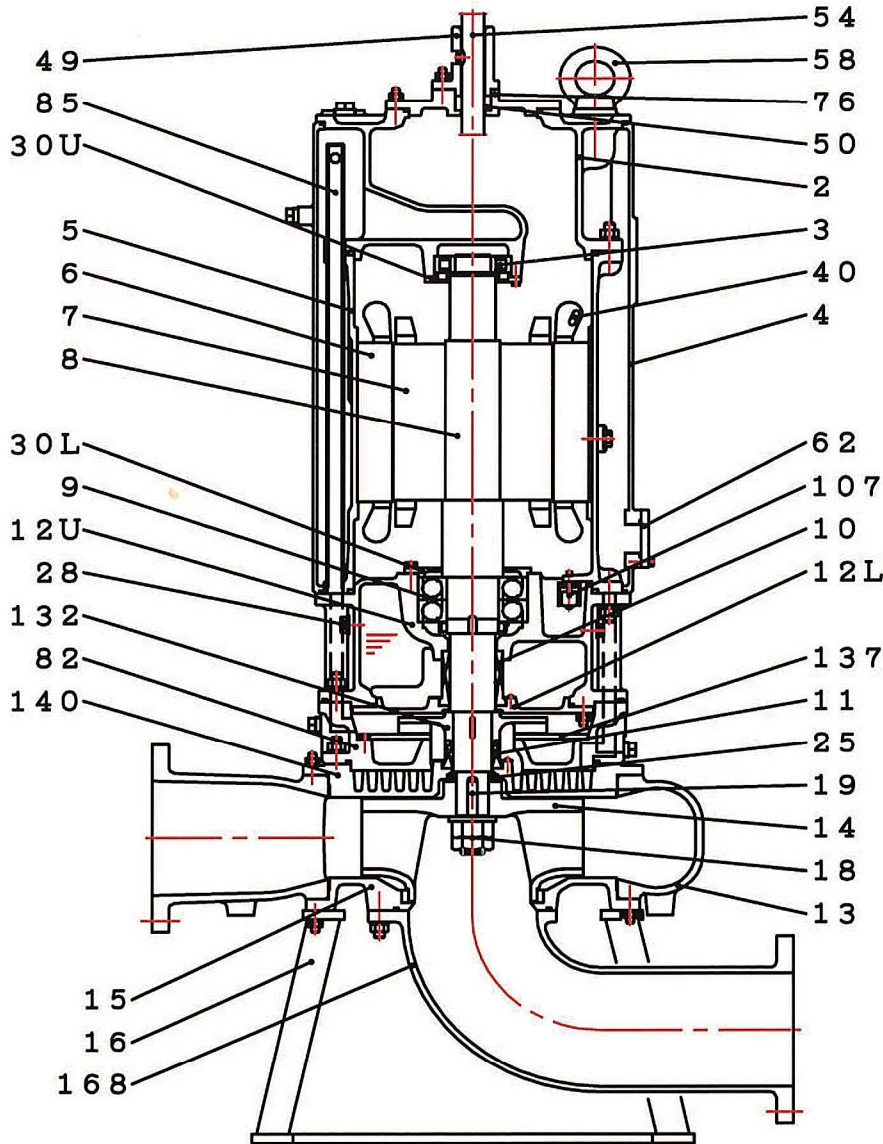
No.	Description
2	Cable Chamber
49	
50	
54	Cabtyre Cable
58	Eyebolt
3	Upper Bearing
5	Motor Housing
6	Stator
7	Rotor
8	Shaft
9	Lower Bearing
10	Mechanical Seal
12U	Oil Chamber
12L	
28	Pump Casing
13	
14	
18	Impeller
19	
15	Suction Cover
16	Stands
40	Thermal Protector
168	Suction Elbow

Cross Section and Parts (ex. Model SUJD)



No.	Description
2	Cable Chamber
49	
50	
76	Cabtyre Cable
54	
58	Eyebolt
3	Upper Bearing
4	Cooling Jacket
5	Motor Housing
6	Stator
7	Rotor
8	Shaft
9	Lower Bearing
10	Mechanical Seal
12U	Oil Chamber
12L	
28	Pump Casing
13	
14	
18	Impeller
19	
15	Suction Cover
16	Stands
82	Heat Exchanger
107	Water Penetration Detector
168	Suction Elbow

Cross Section and Parts (ex. Model SUKD)



No.	Description
2	Cable Chamber
49	
50	
76	
54	Cabletyre Cable
58	Eyebolt
3	Upper Bearing
30U	
4	Cooling Jacket
62	
5	Motor Housing
6	Stator
7	Rotor
8	Shaft
9	Lower Bearing
30L	
10	Mechanical Seal
11	
12U	Oil Chamber
12L	
28	
13	Pump Casing
14	Impeller
18	
19	
15	Suction Cover
16	Stands
40	Thermal Protector
82	Heat Exchanger
85	
137	
140	
132	Circulation Impeller
107	Water Penetration Detector
168	Suction Elbow

• The designs or specifications of the types in this catalogue are subject to change without prior notice due to continual improvement.

Please provide the following information with inquiry on order.

- Application
- Type of Liquid
- Total Dynamic Head
- Discharge Flow Rate
- Discharge Diameter
- Supply Voltage, Frequency



EIM ELECTRIC CO., LTD.

<http://www.eimpump.co.jp>

10-2-16, Inokuma, Mizumakimachi, Onga-gun, Fukuoka 807-0001 Japan
 Phone: +81-93-202-4147 FAX: +81-93-202-1288
 E-mail Address: overseas@eimpump.co.jp

PCE-2020HK
 Printed in Japan 2018-03 0.3ET