

**AURORA<sup>®</sup>**

**COMPLETE PUMP SOLUTIONS  
FOR FIRE PROTECTION**

**新法機械有限公司**

**NEW WAY ENGINEERING CO., LTD.**

香港九龍新蒲崗六合街8號六合工業大廈22字樓F座

FLAT F, 22/F, LUK HOP INDUSTRIAL BUILDING,

8 LUK HOP STREET, SAN PO KONG, KOWLOON, H.K.

Tel : 2325 6892, 2325 7196

Fax No.: (852) 2322 1768

E-mail : [info@newway.com.hk](mailto:info@newway.com.hk)

[WWW.AURORAPUMP.COM](http://WWW.AURORAPUMP.COM)





## AURORA®

Aurora Pump provides fire protection pumping for a variety of solutions throughout the world.

With over ninety years of experience, Aurora's commitment to excellence goes beyond the product line by being dedicated to keeping our customers, distributors and employees constantly educated and updated on the leading developments in fire protection. Our computer software programs assist with selecting the best pumps and systems along with providing pump drawings and specifications. These programs save valuable time in the selection and evaluation of pumps and systems.

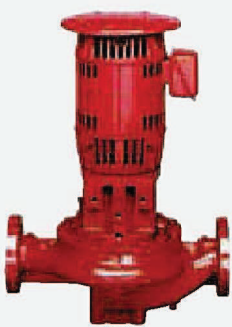
As an ISO 9001 registered company, Aurora Pump is committed to quality. In addition, to meet your time-critical requirements, Aurora offers the Red Hot quick ship program for total fire pump packages. Along with our outstanding customer service, Aurora will keep your fire pump system at peak performance for years to come. You can rely on Aurora Pump and our qualified distribution network to provide total pump solutions for fire protection.



Pictured at top: Packaged Fire Pump System.

Pictured at bottom: Typical housed diesel driven fire pump with test meter.

### Vertical Inline



#### Model 383

##### Single Stage Inline Fire Pump

Flows: 50 to 1,500 GPM (11.3 to 340 m<sup>3</sup>/hr)  
Pressures: 40 to 159 PSI (2.7 to 11 bar)

- UL Listed/FM Approved/NFPA-20 Design
- Space Saving Vertical Design
- Easy Maintenance without Disturbing Surrounding Piping
- Bronze-Fitted Pump Construction

### End Suction



#### Model 384

##### End Suction Fire Pump

Flows: 50 to 1500 GPM (11.3 to 340 m<sup>3</sup>/hr)  
Pressures: 40 to 225 PSI (2.7 to 15.5 bar)

- UL Listed, FM Approved Performance
- Electric and Diesel Speeds
- Back Pullout Design for Easy Pump Service without Disconnecting Pipe
- Frame-Mounted Design
- Small Footprint Ideal for Retrofit
- Designed for Installations such as Schools, Office Buildings and Hospitals

### Horizontal Split Case



#### Models 481, 485, 491, 492, 495

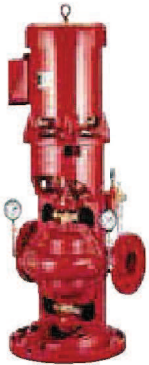
##### Horizontal Split Case Electric Drive Fire Pumps

Flows: 250 to 5,000 GPM (56.8 to 1135 m<sup>3</sup>/hr)  
Pressures: 40 to 435 PSI (2.7 to 30 bar)

- UL Listed/FM Approved/NFPA-20 Design
- For Commercial, Industrial and Marine Use
- Diesel and Electric Driven Available
- Lower Initial Cost
- Quicker Delivery with Red Hot Quick Ship Program
- Ease of Maintenance

# Fire Pumps and Systems

## Vertical Split Case



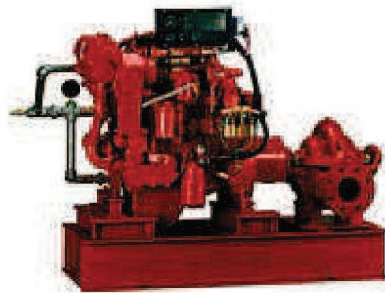
Model 483

### Vertical Split Case Electric Drive Fire Pump

Flows: 250 to 2,500 GPM [56.8 to 568 m<sup>3</sup>/hr]  
Pressures: 40 to 200 PSI [2.7 to 13.8 bar]

- UL Listed/FM Approved/NFPA-20 Design
- For Commercial, Industrial and Marine Use
- Electric Driven Available
- Lower Initial Cost
- Ease of Maintenance

## Diesel-Driven Split Case



Models 481, 485, 491, 492, 495

### Horizontal Split Case Diesel Drive Fire Pumps

Flows: 250 to 5,000 GPM [56.8 to 1,135 m<sup>3</sup>/hr]  
Pressures: 40 to 435 PSI [2.8 to 30 bar]

- UL Listed/FM Approved/NFPA-20 Design
- For Commercial, Industrial and Marine Use
- Diesel and Electric Driven Available
- Lower Initial Cost
- Quicker Delivery with Red Hot Quick Ship Program
- Ease of Maintenance

## Vertical Turbine



### Fire Pump Vertical Turbine

Flows: 250 to 4,500 GPM [56.8 to 1,022 m<sup>3</sup>/hr]  
Pressures: 50 to 370 PSI [3.4 to 25.5 bar]

- UL Listed/FM Approved/NFPA-20 Design
- For Commercial, Industrial and Marine Use
- Special Materials for Seawater Applications
- Diesel and Electric Driven

## Jockey Pump



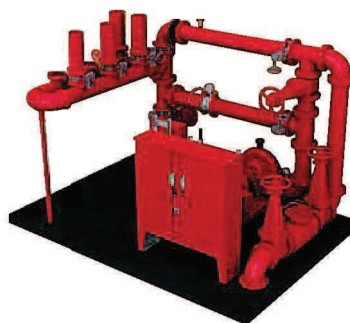
Models PVM & PVMX

### Jockey Pumps

Horsepower: 1/2 to 40  
Flows: 50 GPM [11.3 m<sup>3</sup>/hr]  
Capacities: 215 GPM [48.8 m<sup>3</sup>/hr]  
Pressures: 330 PSI [22.7 bar]  
Heads: 800 Feet [244 m]  
Temperatures: 250°F [121°C]

- Space-Saving Design Recommended Where Floor Space Is Extremely Limited
- Available in Cast Iron or 316 Stainless Steel Materials
- Standard TEFC Motor

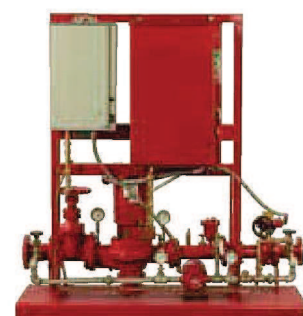
## Packaged System



### Packaged Fire Pump Systems

- UL Listed/FM Approved Aurora® Fire Pump
- UL Listed/FM Approved Fire Pump Controller
- ETL listed
- Aurora Jockey Pump
- UL Listed Jockey Pump Controller
- Pressure Sensing Lines Complete per NFPA 20
- Listed DS & Y Gate & Butterfly Valves with Tamper Switches
- Suction and Discharge Pressure Gauges
- Automatic Casing Air Release Valve
- Casing Pressure Relief Valve [Electric Packages]
- Hose Header with Valves, Caps & Chains
- Suction and Discharge Piping per NFPA 20
- Removable Lifting Lugs

## Compact System



### Compact Fire Pump Systems

Flows to 750 GPM [170.3 m<sup>3</sup>/hr]  
Pressures to 160 PSI [11.0 bar]

- Ideal for Smaller Areas – Fits through a 36" Doorway
- Multiple Starting Methods Available for the Fire Pump with Optional Automatic Transfer Switch
- Optional City Bypass



# Fire Pump Houses



- Designed to Meet Specific Environmental Requirements
- All-Steel Building with Seismic Certification
- Easy Access Entries
- Electric Heaters with Built-In Thermostat
- Continuous Duty Exhaust Fan
- AC Motor/Solenoid Operated Louver
- Interior Fluorescent and Flood Light, Exterior 70 W HPS Light
- Sprinkler System per NFPA 13
- Finished through Wall or Floor Penetration
- Single Point Electrical Connection
- State Certification Label

## Accessories

- Casing Relief Valve/Air Relief Valve
- Eccentric Suction Reducers, Concentric Discharge Increases
- Test Manifold, Hose Valves, Ball Drip Valve
- Main Relief Valve, Waste Cone
- Flow Metering Systems
- Diesel Batteries, Racks and Cables
- Double Wall Fuel Tanks and Fittings
- Diesel Engine Mufflers
- Exhaust Flex Connectors
- City Bypass
- Backflow Preventer
- Insulated Exhaust Piping
- Roof Curb for Vertical Turbine Installation and Removal
- Alarms and Tamper Switches Prewired to a Common Junction Box



800 AIRPORT ROAD,  
NORTH AURORA, ILLINOIS 60542  
WWW.AURORAPUMP.COM

3601 FAIRBANKS AVENUE,  
KANSAS CITY, KANSAS 66106



Because we are continuously improving our products and services, Pentair reserves the right to change specifications without prior notice.  
AF-02-1001 03/25/13 © 2013 Pentair Ltd. All Rights Reserved.